



APRIL 2024 Update

01672 511777

'Elm Tree Cars' @ Facebook

NO JOKING AROUND - WE WANT TO BUY YOUR CAR!



MERCEDES-BENZ CLA 45

AMG 375BHP

Just £27,499



AUDI A8 TDI

SPORT 254BHP

JUST £18,499



MINI CLUBMAN S

EXCLUSIVE 190BHP

Just £16,999

Did Cazoo Play Their Investors For Fools? ☐

In a surprising twist that sounds like an April Fools' joke, the online only car dealer Cazoo, an outspoken critic of traditional car dealerships, is now inviting those "sharp-elbowed salesmen" to come aboard and advertise on their platform! The company is to stop selling used cars and instead hopes to transform into an online advertising marketplace. The CEO has stepped down, further job cuts have been announced, car stock is being sold off, and they might yet delist from the New York Stock Exchange!

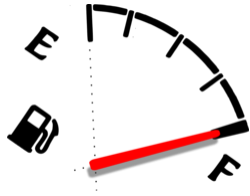


Once worth a staggering £8billion, the company was recently valued at just £20million, leaving a £1000 investment worth around £2.56 by our reckoning..

Spring Budget Highlights!

1. Steady Insurance Premium Tax (IPT)

IPT remains unchanged, contributing approximately £67 to the average insurance premium. Despite this, insurance costs have increased significantly, by about 25% last year!



2. Fuel Duty Remains Frozen

Some good news! Fuel duty will remain frozen at 52.95p per litre until March 2025, the 14th consecutive year of stability. Call us cynical but the petroleum companies might just take this opportunity to up their margins!

3. No New Incentives For EVs

If you are 'watching this space' following last month's article, it is a rather empty view! There was a notable absence of new incentives to encourage EV adoption. The EV road tax exemption ends next April.



Interestingly, the Americans have just announced another period of incentives for lower emission vehicles, aimed at manufacturers. This should encourage EV sales but also leaves open a door for alternative green technologies, something Europe has not done.

80 Is The New 50!



1.65 million drivers on Britain's roads are now aged 80+ , including a staggering 510 centenarians, the oldest being 108!!

At Elm Tree we're keeping pace. A customer in his 80s recently asked if he was the oldest customer we had sold a car to.. but he wasn't even the oldest that week!

This month alone we have matched cars with two octogenarians and a spirited nonagenarian, Mrs Horton, who is pictured here with her car. □

British Train Tales - A Bit Of A Joke!



In our experience, railway travel in the UK often feels more like a comedy of errors than a famous five novel.

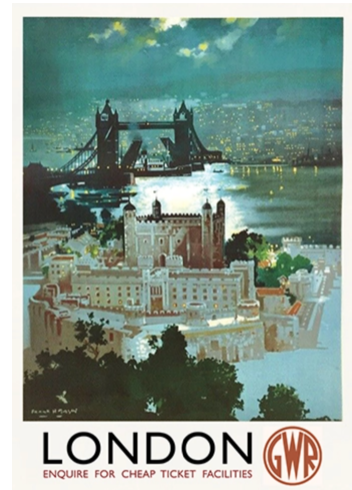
A few years ago Mark and his daughter caught a train back from London. They expected to chat away with a coffee whilst zipping through the countryside. Instead, they stumbled into a scene straight out of Fawlty Towers, complete with carriages so overcrowded you were lucky to find space to stand (seat reservation or not), and first-class tickets so pricey, you could jet-set off on a mini vacation for the same cost! The cherry on top? A server with a knack for rudeness that would make Basil

Fawlty proud. Oh, and an unexpected hour long standstill just shy of Swindon station.

Last month Laura paid £68 for a standard class ticket to London from Swindon. She had a reserved seat on carriage 'H', which mysteriously never appeared, so she instead stood in a windowless corridor. The return journey was even worse, leading to an

impromptu late-night rescue from Reading .. by car.

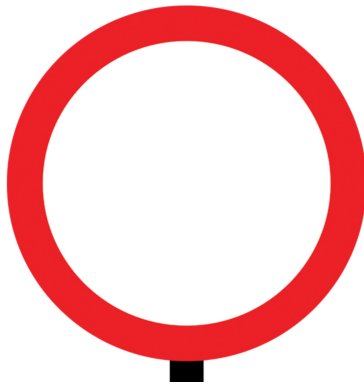
Despite pouring a jaw-dropping **£11.9 billion into the railways last year**, it seems our train tales still lean more towards slapstick than sleek. But hey, at least the posters look good! ☐



April Fools?

The UK has been using road signs for almost 60 years! The original system, created by Jock Kinneir and Margaret Calvert, was officially launched on 1st January 1965. Many more signs have been added since then and it seems that the British public is getting quite confused! For example, do you know what the 'no entry' sign looks like? 62% of 1000 drivers surveyed last year didn't! We have included 6 signs below, but which are real UK road signs?

Click to reveal a green tick for real signs!



NO VEHICLES



BEWARE MIGRATORY TOADS



MINIMUM SPEED 30MPH



NO STOPPING



NO VEHICLES CARRYING EXPLOSIVES



BEWARE SLOW MOVING TANKS

☐REMEMBER THE CLOCKS WENT FORWARD YESTERDAY!☐

*GWR.COM *DESIGNMUSEUM.ORG *RACFOUNDATION.ORG *FT.COM *BBC.CO.,UK *GOV.UK

Share this email:



[Manage](#) your preferences | [Opt out](#) using TrueRemove™

Got this as a forward? [Sign up](#) to receive our future emails.

View this email [online](#).

London Road
Marlborough, | SN8 2AG GB

This email was sent to .
To continue receiving our emails, add us to your address book.

